

MODEL 100 FLOW CONTROLLER

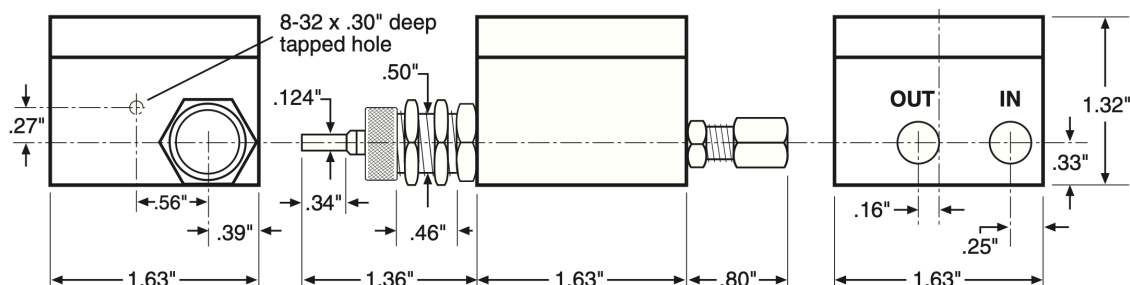
Technical Note 613

The Model 100 is an upstream-referenced flow controller; that is, it maintains a constant flow rate as long as the upstream (inlet) pressure is held constant, even during downstream pressure fluctuations from column switching, temperature programming, sequence reversal, or back-flushing.

SPECIFICATIONS

Maximum flow may be as low as 100 mL/min or as high as 10 L/min. Maximum operating pressure is 200 psi; maximum temperature is 120°C.

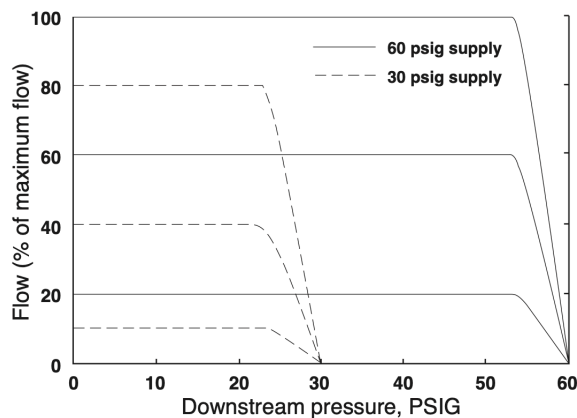
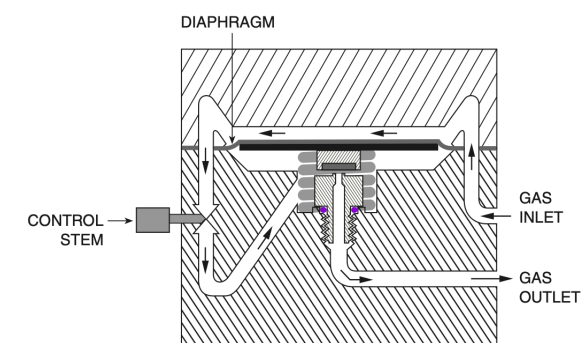
DIMENSIONS



FLOW RATES

The Model 100 accurately maintains the set flow rate in spite of fluctuating downstream pressure— even if the fluctuation is to within 7.5 psi of the supply pressure. When the flow controller is equipped with the optional Spectrol digital dial, settings are reproducible to better than 1%.

NOTE: With all our flow controllers, the inlet pressure must exceed the outlet pressure by 10 psi.



FLOW CHARACTERISTICS

At 40 psig nitrogen

