



# Using Valco Electric Actuators with Sciex Analyst® Software

Sciex Analyst LC-MS/MS acquisition software for TripleQuad and QTRAP instruments is fully compatible with Valco two-position microelectric actuators. Serial and USB versions of the Valco universal electric actuators in two position mode can also be used, but must first be configured to a legacy mode which emulates microelectric actuator behaviors and responses.

## 1. Microelectric actuator

Initialize the actuator as described in Technote 413a, available in the support section of vici.com.

### Universal actuator

For steps A and B, you will need the Universal Actuator Manual supplied with your actuator or available for download in the support section of vici.com. For step C, you will need to download Technote 429.

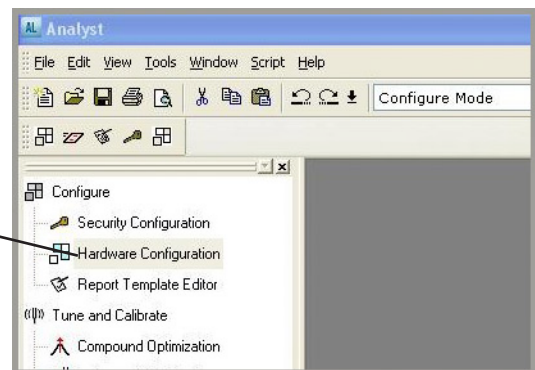
A. Make sure that the actuator is set for Two Position with Stops. Refer to the manual as necessary.

B. Assign an ID to the actuator. Refer to the manual as necessary.

C. Configure the actuator for operation in legacy mode as described in Technote 429.

- Once the actuator has been prepared and connected to the appropriate port on the computer, open the Analyst software and double-click **Hardware Configuration** to open the Hardware Configuration window.

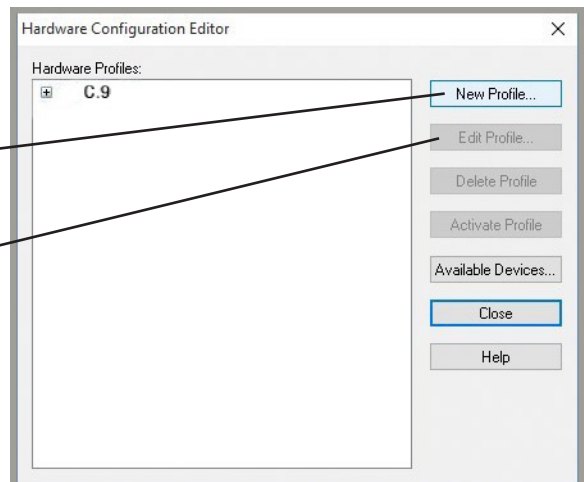
DOUBLE-CLICK  
HARDWARE CONFIGURATION



- In the Hardware Configuration window, click **New Profile**, or modify an existing profile by selecting one from the list and clicking **Edit Profile**.

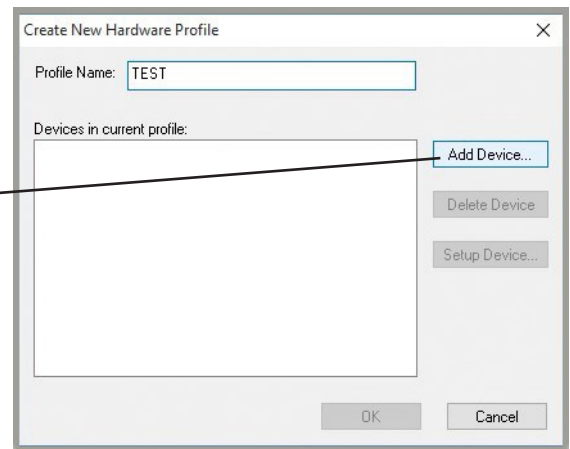
CLICK HERE TO CREATE  
A NEW PROFILE

OR SELECT A PROFILE  
FROM THE LIST AND  
CLICK HERE TO MODIFY IT



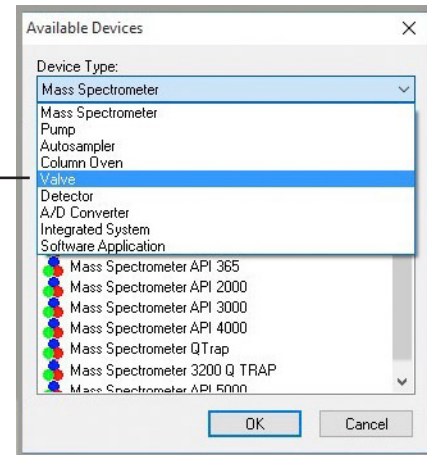
4. Click **Add Device** in the Create New Hardware Profile window.

CLICK HERE TO TO  
OPEN A LIST OF  
AVAILABLE DEVICES



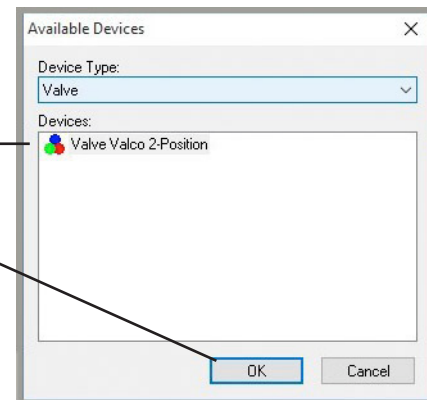
5. In the Available Devices window, select **Valve** from the Device Type pulldown menu.

SELECT VALVE FROM  
THE PULLDOWN MENU



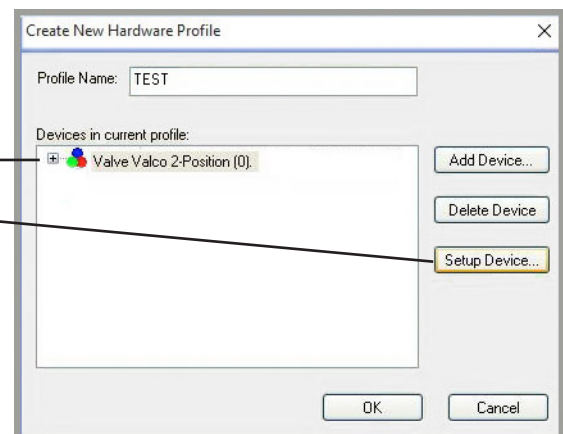
6. Select **Valve Valco 2-Position** from the list of Devices, and click **OK** to return to the Create New Hardware Profile window (*bottom right*), which now contains Valve Valco 2-Position.

SELECT  
VALVE VALCO 2-POSITION,  
THEN CLICK OK

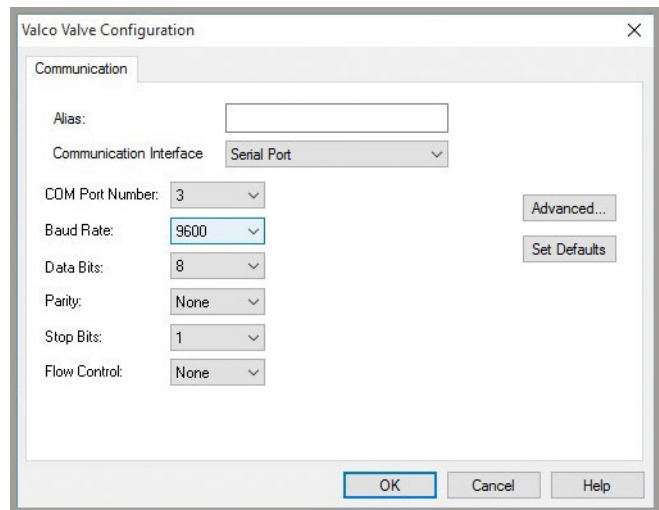


7. Select **Valco Valve 2-Position** from the list of Devices in current profile, then click **Setup Device**.

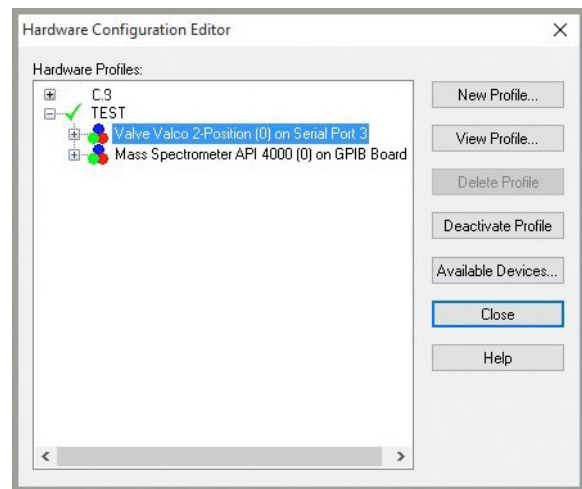
SELECT  
VALVE VALCO 2-POSITION,  
THEN CLICK SET UP DEVICE



8. In the Configuration window, adjust your settings for COM Port number, Baud Rate, etc. as required and click OK.



9. On the next screen, click **Activate Profile** and a green check mark will appear next to the profile name, as shown at right.



North America, South America, and Australia/Oceania contact:

**VICI** Valco Instruments Co. Inc.  
P.O. Box 55603  
Houston, TX 77255  
Sales: (800) 367-8424  
Tech: (713) 688-9345  
Fax: (713) 688-8106 valco@vici.com

Europe, Asia, and Africa contact:

**VICI** VICI AG International  
Parkstrasse 2  
CH-6214 Schenkon  
Switzerland  
Phone: +41 41 925 6200  
Fax: +41 41 925 6201 info@vici.ch  
Cheminer<sup>®</sup> and VICI<sup>®</sup> are registered trademarks of Valco Instruments Co. Inc. and VICI AG

TN-428 10/20