

Dimension in mm [Inch]

Type	Connections	X		Y	
		mm	Inch	mm	Inch
W	1/32"	Ø25.4	Ø1.0"	~32	~1.25"
W	1/16"	Ø31.75	Ø1.25"	~44	~1.73"
UW	1/16"	Ø38.1	Ø1.5"	~49	~1.93"
UW	1/8"	Ø44.45	Ø1.75"	~57.4	~2.26"

THIS DOCUMENT AND THE INFORMATION WHICH IT CONTAINS SHALL NOT BE USED, EXPLOITED OR SOLD, AND SHALL NOT BE REVEALED OR DISCLOSED TO OTHERS WITHOUT THE EXPRESS WRITTEN PERMISSION OF VICI. THIS DOCUMENT SHALL REMAIN THE PROPERTY OF VICI AND SHALL BE RETURNED UPON DEMAND.

Material: MATERIAL
Dimensionen: DIMENSIONS

Anderungen: a) 15.01.16 JM #947, New drawing
MODIFICATIONS:

PROJEKTION: Allgemein Toleranzen: GENERAL TOLERANCES: SN EN 22768-1/ ISO 2768

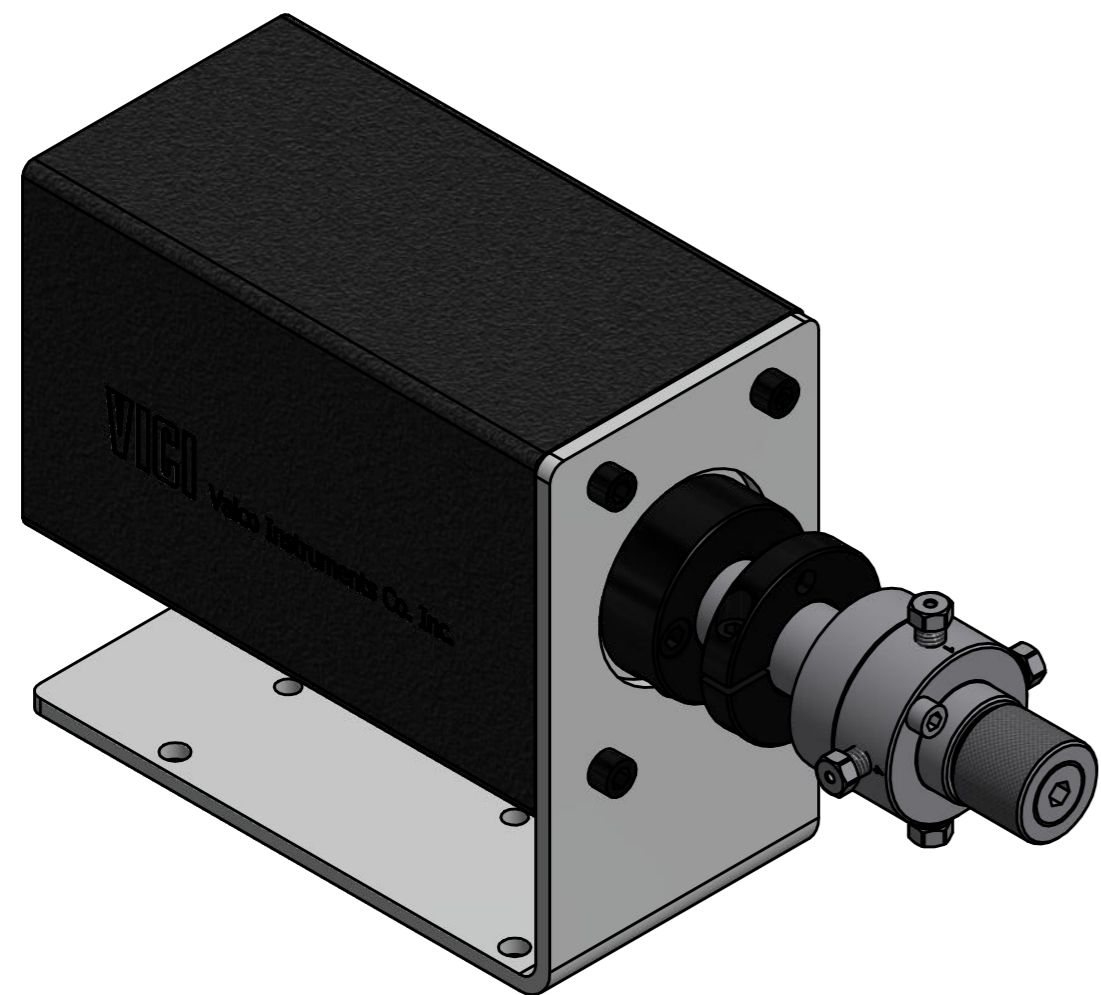
Gezeichnet DRAWN: 15.01.2016 F.P.
Geprüft / Freigebe CHECKED/RELEASE: 15.01.2016 FCo
CAD Nr. CAD NO.: 506429.idw

Unterverz.: SUB DIREC.: KUNDE
Zeichnungs Nr. / DRAWING NO.: 2 - GE - 5064.29 a

Universal actuator, 2- pos. valve with standoff

General dimensions

VICI VICI AG International, CH-6214 Schenkon



SHOWN EUHA-2C4WE