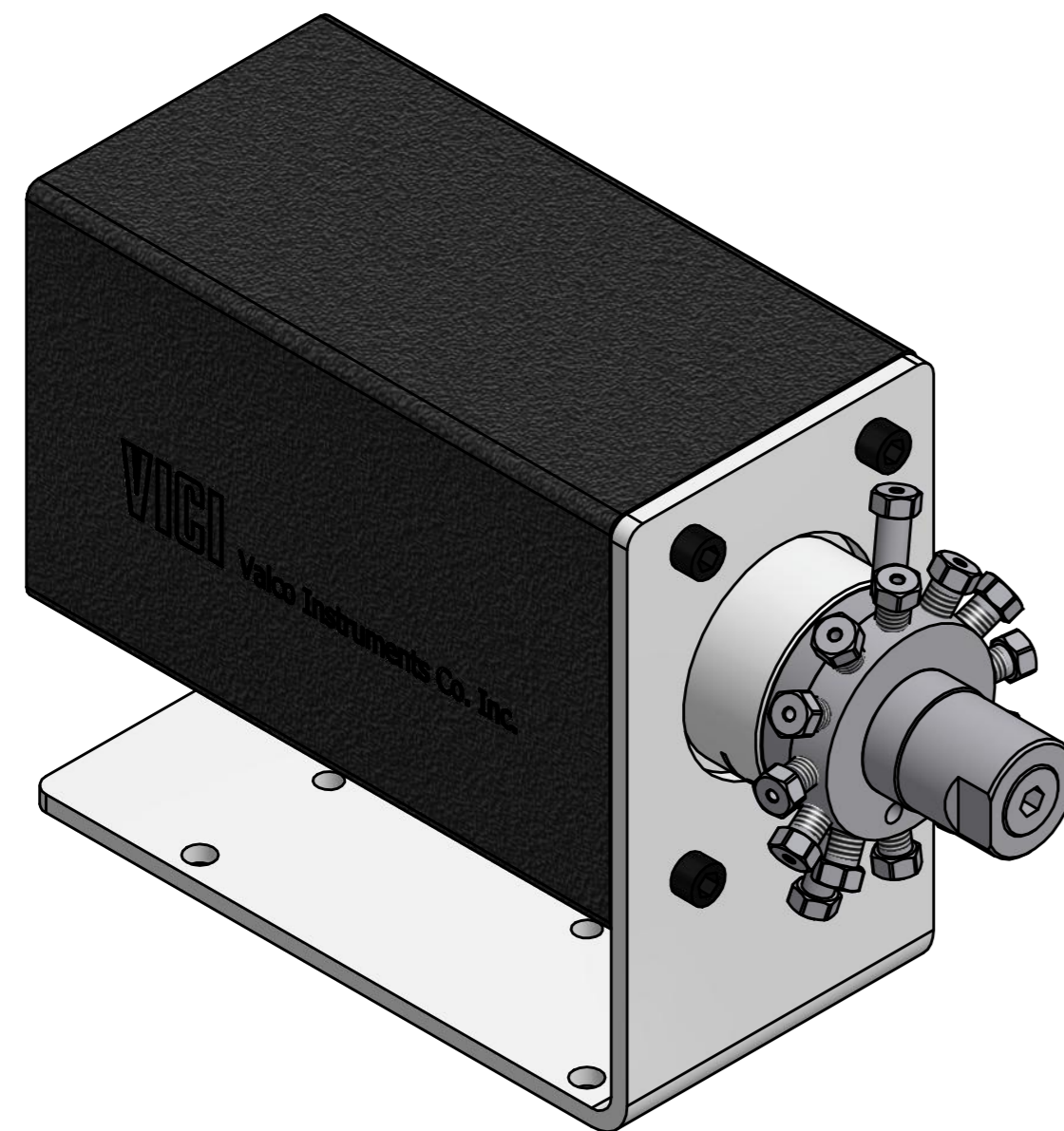
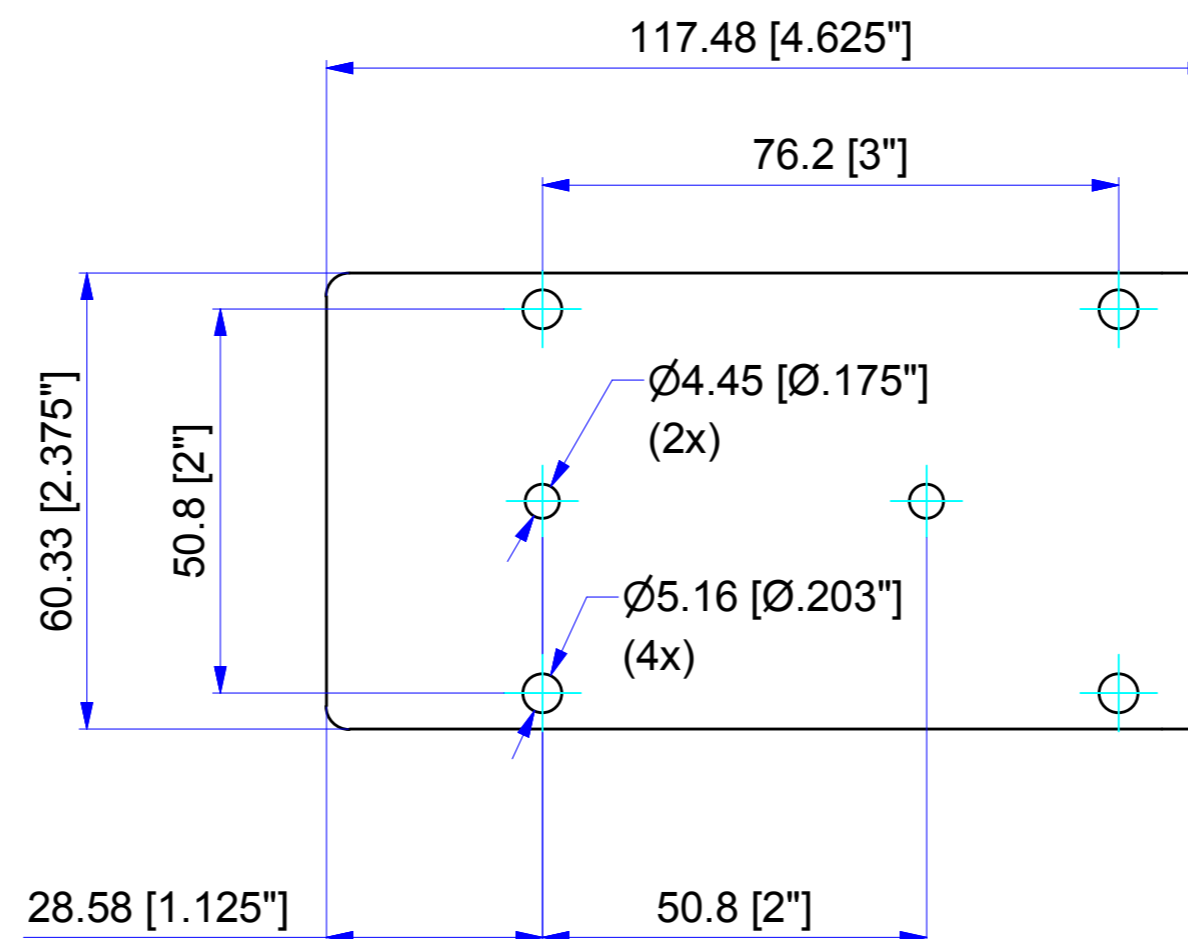


Dimension in mm [Inch]

Type	Connections	No. of Pos.	X		Y	
			mm	Inch	mm	Inch
CSD*UW	1/16"	4, 6, 8, 10	Ø38.1	Ø1.5"	~34.0	~1.34"
CSD*UW	1/16"	12, 16	Ø34.9	Ø1.375"	~32.0	~1.25"
SD*UW	1/8"	4, 6, 8	Ø44.45	Ø1.75"	~38.0	~1.50"
CST*UW	1/16"	4, 6	Ø34.9	Ø1.375"	~31.5	~1.24"
ST4UW	1/8"	4	Ø44.45	Ø1.75"	~39.5	~1.56"



SHOWN EUTACST6UWE



THIS DOCUMENT AND THE INFORMATION WHICH IT CONTAINS SHALL NOT BE USED, EXPLOITED OR SOLD, AND SHALL NOT BE REVEALED OR DISCLOSED TO OTHERS WITHOUT THE EXPRESS WRITTEN PERMISSION OF VICI. THIS DOCUMENT SHALL REMAIN THE PROPERTY OF VICI AND SHALL BE RETURNED UPON DEMAND.				Material MATERIAL		Dimensionen DIMENSIONS	
Änderungen: a) 25.02.11 FP #652, added MTG-holes (4x) ECN 15894				Projektion PROJECTION		Allgemein Toleranzen GENERAL TOLERANCES	
PART NO.:				SN EN 22768-1/ ISO 2768			
<b>Universal actuator with Multiposition valve, UW type</b> General dimensions				Masstab SCALE	Gezeichnet DRAWN	27.10.2010	F.P.
				1:1	Geprüft / Freigegeben CHECKED/RELEASE	25.02.2011	FCo
				CAD Nr. CAD NO.	506383.idw		
Unterverz.: SUB DIREC.:				KUNDE			
Zeichnungs Nr. / DRAWING NO.				2 - GE - 5063.83 a			
VICI VICI AG International, CH-6214 Schenkon							