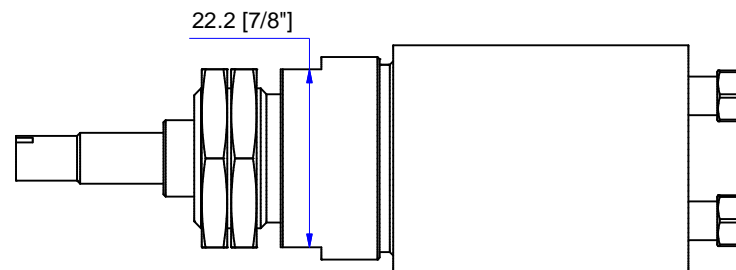
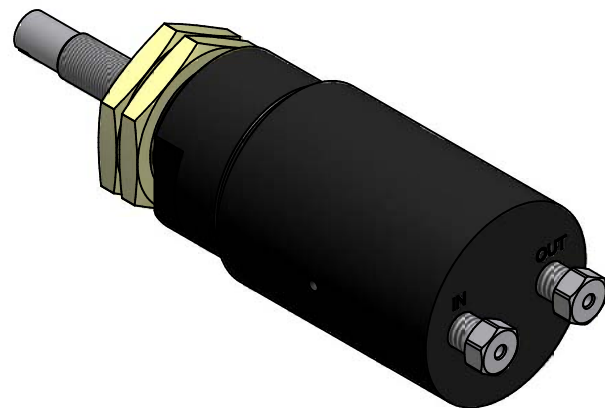


Dimension in mm [Inch]



SHOWN PR51A60Z1



| Prod No.: | Description | L | X |
|-----------|--|----------------|-------------------|
| PR51A15Z1 | Valco internal fittings, 1/16", 0-15 psi | -91 [-3.57"] | Hex. 6.35 [1/4"] |
| PR51A30Z1 | Valco internal fittings, 1/16", 0-30 psi | -91 [-3.57"] | Hex. 6.35 [1/4"] |
| PR51A60Z1 | Valco internal fittings, 1/16", 0-60 psi | -91 [-3.57"] | Hex. 6.35 [1/4"] |
| PR51A15Z2 | Valco internal fittings, 1/8", 0-15 psi | -93.5 [-3.67"] | Hex. 9.53 [3/8"] |
| PR51A30Z2 | Valco internal fittings, 1/8", 0-30 psi | -93.5 [-3.67"] | Hex. 9.53 [3/8"] |
| PR51A60Z2 | Valco internal fittings, 1/8", 0-60 psi | -93.5 [-3.67"] | Hex. 9.53 [3/8"] |
| PR51A15E2 | External fittings, 1/8", 0-15 psi | -105 [-4.12"] | Hex. 11.1 [7/16"] |
| PR51A30E2 | External fittings, 1/8", 0-30 psi | -105 [-4.12"] | Hex. 11.1 [7/16"] |
| PR51A60E2 | External fittings, 1/8", 0-60 psi | -107 [-4.2"] | Hex. 11.1 [7/16"] |

THIS DOCUMENT AND THE INFORMATION WHICH IT CONTAINS SHALL NOT BE USED, EXPLOITED OR SOLD, AND SHALL NOT BE REVEALED OR DISCLOSED TO OTHERS WITHOUT THE EXPRESS WRITTEN PERMISSION OF VICI. THIS DOCUMENT SHALL REMAIN THE PROPERTY OF VICI AND SHALL BE RETURNED UPON DEMAND.

Aenderungen: MODIFICATIONS:

PART NO.: PR51A*

MATERIAL: Dimensionen DIMENSIONS

Projektion PROJECTION: Allgemein Toleranzen GENERAL TOLERANCES: SN EN 22768-1/ISO 2768

Masstab SCALE: 1.5:1 Gezeichnet DRAWN: 16.10.2012 F.P. Geprüft / Freigegeben CHECKED/RELEASE: 16.10.2012 FCo CAD Nr.: 506397.idw CAD NO.

Pressure regulators
No knob and shut-off feature

General dimensions

Unterverz.: SUB DIREC.: KUNDE Zeichnungs Nr. / DRAWING NO.

VICI® VICI AG International, CH-6214 Schenkon **3 - GE - 5063.97**