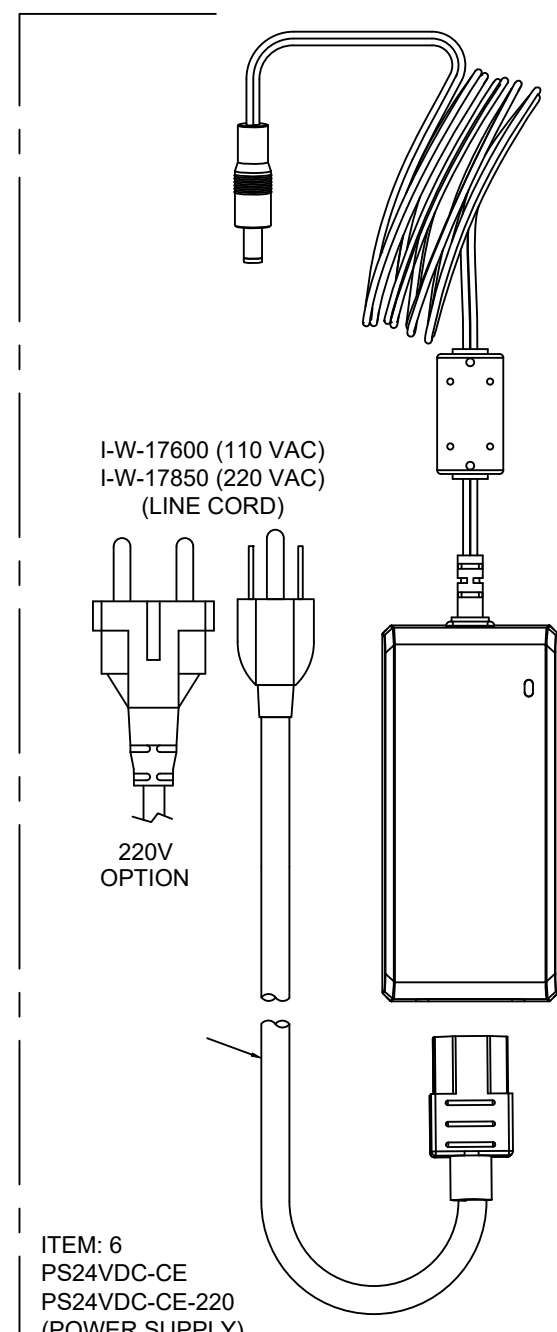
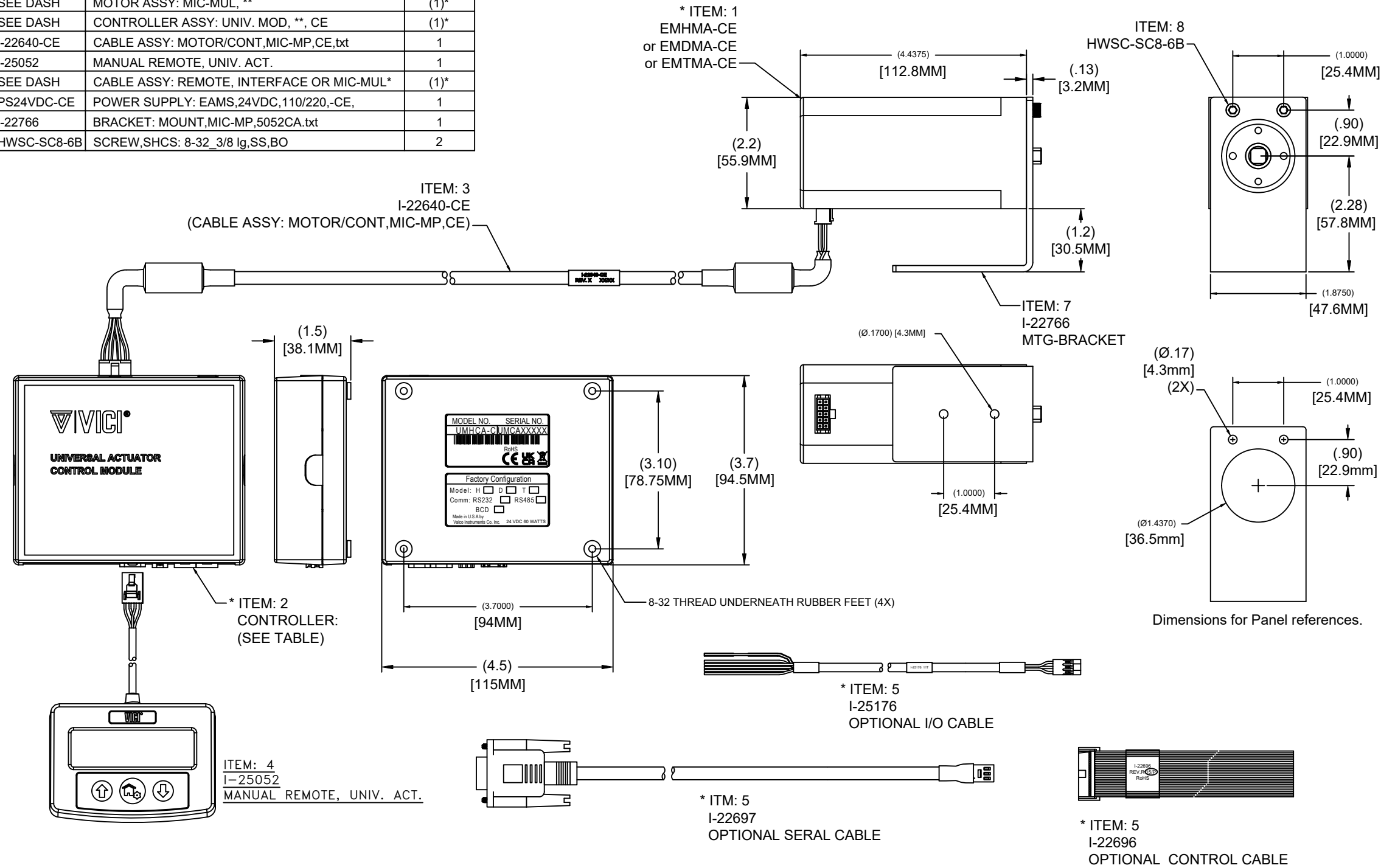


ITEM:	PN:	DESCRIPTION:	QTY.
1	SEE DASH	MOTOR ASSY: MIC-MUL, **	(1)*
2	SEE DASH	CONTROLLER ASSY: UNIV. MOD, **, CE	(1)*
3	I-22640-CE	CABLE ASSY: MOTOR/CONT,MIC-MP,CE,txt	1
4	I-25052	MANUAL REMOTE, UNIV. ACT.	1
5	SEE DASH	CABLE ASSY: REMOTE, INTERFACE OR MIC-MUL*	(1)*
6	PS24VDC-CE	POWER SUPPLY: EAMS,24VDC,110/220,-CE,	1
7	I-22766	BRACKET: MOUNT,MIC-MP,5052CA.txt	1
8	HWSC-SC8-6B	SCREW,SHCS: 8-32_3/8 lg,SS,BO	2

MANUFACTURE TO CURRENT RoHS SPECS



ASSY-PN:	DESCRIPTION:	ITEM: 1	ITEM: 2	*ITEM: 5
UMH	ACTUATOR MODULAR:H/S DigIO P/S M/R	EMHMA-CE	UMHCA	I-25176
UMHA	ACTUATOR, MODULAR: H/S RS-232, P/S, M/R	EMHMA-CE	UMHCA	I-22697
UMD	ACTUATOR MODULAR:M/T DigIO P/S M/R	EMDMA-CE	UMDCA	I-25176
UMDA	ACTUATOR, MODULAR: M/T RS-232, P/S, M/R	EMDMA-CE	UMDCA	I-22697
UMT	ACTUATOR MODULAR:H/T DigIO P/S M/R	EMTMA-CE	UMTCA	I-25176
UMTA	ACTUATOR, MODULAR: H/T RS-232, P/S, M/R	EMTMA-CE	UMTCA	I-22697
UMHF	ACTUATOR, MODULAR: H/S RS-485, P/S, M/R	EMHMA-CE	UMHCA-F	I-22697
UMDF	ACTUATOR, MODULAR: M/T RS-485, P/S, M/R	EMDMA-CE	UMDCA-F	
UMTF	ACTUATOR, MODULAR: H/T RS-485, P/S, M/R	EMTMA-CE	UMTCA-F	
UMHC	ACTUATOR, MODULAR: H/S BCD, RS-232, P/S, M/R	EMHMA-CE	UMHCA-C	I-22696
UMDC	ACTUATOR, MODULAR: M/T BCD, RS-232, P/S, M/R	EMDMA-CE	UMDCA-C	
UMTC	ACTUATOR, MODULAR: H/T BCD, RS-232, P/S, M/R	EMTMA-CE	UMTCA-C	

PDM Status	Released	Valco Instruments Co. Inc. VICI AG INTERNATIONAL
Coating		
Material		
Weight		
SIZE	B	Description UMH/UMD/UMT MODULAR UNIVERSAL ACT
Drawn By MLiu Checked By MBrisbin Approved By MBrisbin	Date 06/10/22 Date 08/01/22 Date 08/01/22	Drawing No. 51780 VALCO No. SEE DASH
3rd Angle Projection		DO NOT SCALE SHEET 1 OF 1